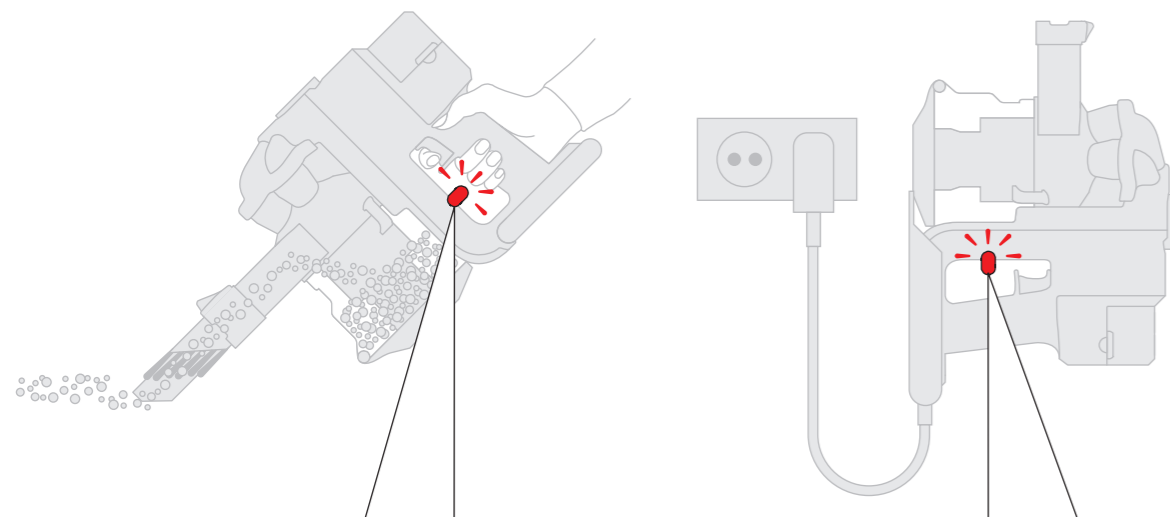


Troubleshooting

①



- Fully or partly charged.
- Fully discharged.
- ⚡ Filter missing/Filter fitted incorrectly. Check/Refit Filter.
or
Machine outside of temperature range. Leave at room temperature until flashing stops.

- Fully charged.
- Machine charging.
- ⚡ Battery outside of temperature range. Remove from the charger and leave at room temperature until red light no longer flashes when placed in the charger.
or
Charging fault. Remove appliance and refit to the recharging unit.

If flashing persists call the Dyson Helpline.

Instructions

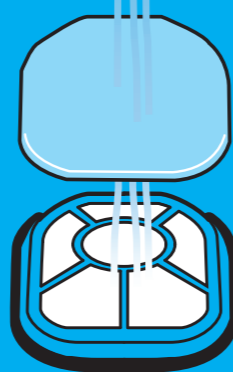
- 1 When wall mounting the recharging unit, always use the appropriate fixings for your wall type.
 - 2 Check to ensure there is no pipework or wiring directly behind the mounting/drilling area.
 - 3 Fine dirt such as flour or plaster dust should only be vacuumed in very small amounts.
 - 4 Do not press down on the nozzle with excessive force when using the appliance, as this may cause damage.
 - 5 Ensure the appliance remains upright in use – do not hold upside-down while vacuuming.
 - 6 If the motor overheats, the appliance will cut out automatically. Leave to cool down for at least an hour before restarting.
- ② 1 When using the appliance, the light on the handle indicates the level of charge. A green light indicates the battery is fully or partly charged. A red light indicates the battery is fully discharged and needs charging.
 - 2 The battery will become hot during use – this is normal.
 - 3 The appliance will cut out immediately when the battery has run out – recharge for continued use.
- ③ 1 To ensure your appliance is always ready to use, store it on the charger.
 - 2 When connected to the charger, a red light indicates the battery is charging. A green light indicates the battery is fully or partly charged. Full charging takes around 3 hours.
 - 3 Charging at below room temperature (< 68°F, 20°C) will significantly reduce run time.



Very important

3-6

Months



Remember

Wash your filters at least every 3-6 months based on individual vacuuming habits.

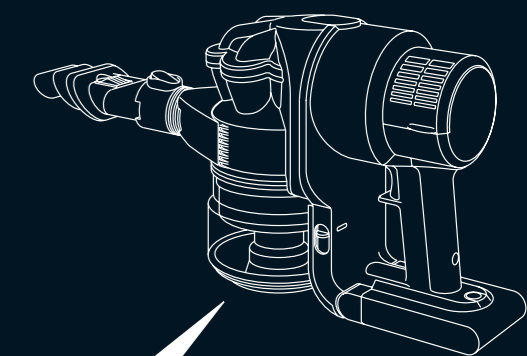


AU Dyson Customer Care
customercare@dyson.com.au
1800 239 766
 (Mon-Fri 8:00am to 6:00pm EST, Sat-Sun 8:30am to 4:00pm EST)
 Dyson Appliances (Aust) Pty Ltd, PO Box 2175, Taren Point,
 Australia, NSW 2229

ID Indonesia Service Centre
021 707 39766
 (Mon-Fri 9:00am to 5:00pm)
 PT.Higienis Indonesia
 Permata Plaza Top floor TF-04
 Jl. M. H. Thamrin Kav. 57, Jakarta 10350

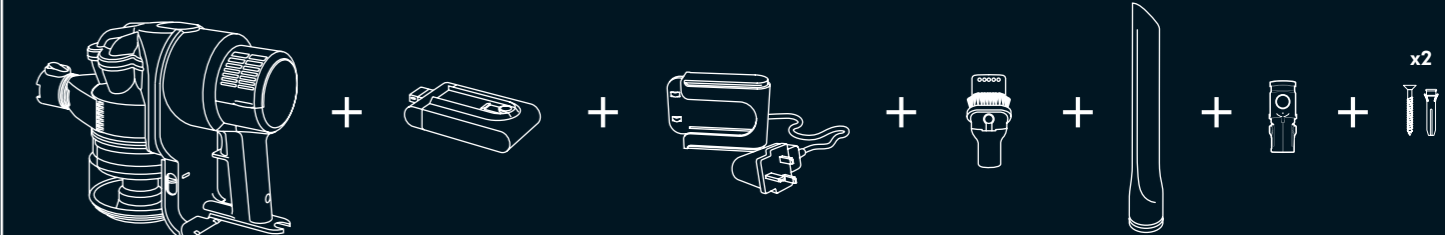
NZ Dyson Customer Care
dyson@averyrobinson.co.nz
0800 397 667
 (Mon-Fri 8:30am to 5:00pm)
 Avery Robinson Ltd, Unit F, 151D Marua Road,
 Ellerslie, Auckland

SG Dyson Customer Care
singapore@dyson.com
7000 435 75 46
 (Mon-Fri 9:00am to 6:00pm, Sat 9:00am to 1:00pm, closed on
 Sunday and public holidays)
 Dyson Singapore Pte Ltd, 2 Leng Kee Road,
 04-09A Thee Hong Centre, Singapore 159086



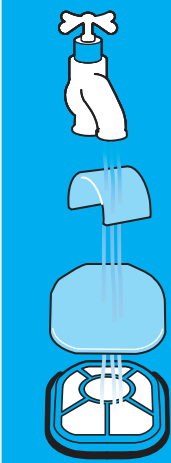
dyson radix 6

Box contents

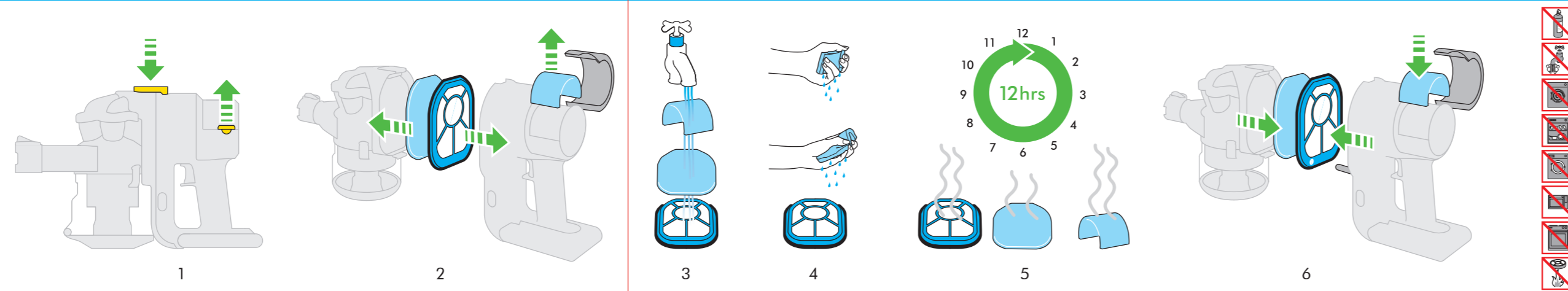


www.dyson.com

Filters



3-6 MONTHS



Tools

